

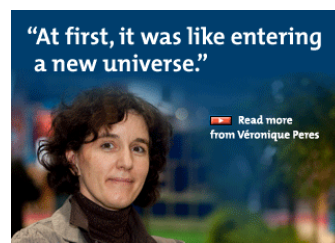
This document, a summary of Pittcon, contains the necessary information you will need to answer important questions during your visa interview. Please print this two-page reference guide and be sure to bring it to your interview for additional documentation to facilitate the verification process.

ORLANDO, FLORIDA USA • MARCH 11– 15, 2012
ORANGE COUNTY CONVENTION CENTER

Pittcon, a yearly conference and exposition, is organized by more than 100 volunteer scientists serving on various committees and eleven staff members of The Pittsburgh Conference. The Conference is sponsored by two technical societies, the Spectroscopy Society of Pittsburgh (SSP) and the Society for Analytical Chemists of Pittsburgh (SACP).

The first Pittsburgh Conference on Analytical Chemistry and Applied Spectroscopy, with its Exposition of Modern Laboratory Equipment opened on February 15, 1950, in Pittsburgh, Pennsylvania. Henry Freiser, the first exposition chairman, debuted the Conference with 14 exhibitors, 25 booths, 56 technical papers, and 800 attendees.

Pittcon 2011, the 62nd Conference & Expo held in Atlanta, Georgia, included 17,199 attendees, 979 exhibiting companies occupying 2,059 booths, and offered more than 2,000 technical papers.



300 Penn Center Boulevard, Suite 332, Pittsburgh, PA 15235
Phone: 412-825-3220 • Toll-free: 800-825-3221 • Fax: 412-825-3224
info@pittcon.org • www.pittcon.org

What is Pittcon 2012?

Pittcon is a conference and exposition on scientific instrumentation and the premier meeting place for the inventors, users, manufacturers, and vendors of laboratory instruments, equipment and supplies. Pittcon features the world's largest exposition of instrumentation, a diverse technical Program, and professional-quality Short courses.

- Attracts over 17,000 attendees from industry, academia, and government from more than 85 countries worldwide
- Draws more than 970 domestic and international exhibiting companies offering a one-stop shop for all lab instrumentation, equipment, supplies, and services
- Includes 2,000+ technical papers including symposia, oral presentations, posters, workshops, and awards presented by world renown experts
- Builds skills with in-depth, professional quality Short Courses in a wide range of topics including analytical techniques, bioinformatics, quality assurance, statistics, drug discovery, and more
- Provides an informal venue for attendees to meet with their colleagues to discuss a topic of mutual interest in facilitator-assisted Conferee Networking Sessions at no extra charge to the registration fee
- Gives you the opportunity to speak directly with technical and sales people to gain valuable insights and operating tips on equipment

What Pittcon 2012 has to offer

- Latest advances in laboratory instrumentation, supplies, and services
- Comprehensive solutions for research problems
- New methodologies and techniques for improved productivity
- Numerous educational and networking opportunities
- International booth staffed with multilingual interpreters to assist international attendees

300 Penn Center Boulevard, Suite 332, Pittsburgh, PA 15235
Phone: 412-825-3220 • Toll-free: 800-825-3221 • Fax: 412-825-3224
info@pittcon.org • www.pittcon.org